

2960 NORTH LAKE SHORE DRIVE
A CLASSIC RESIDENCE BY HYATT ■ Chicago

LAKEFRONT LIVING

A posh highrise offers seniors elegant interiors and lake views

For seniors who appreciate the pleasures of highrise living, Hyatt's new Classic Residence on North Lake Shore Drive in Chicago has great appeal. Located on one of Chicago's most desirable residential stretches along Lake Michigan's beachfront, the 37-story structure houses 340 apartments with panoramic views of the lake and the city skyline.

Developed by RESCORP Development, Inc. for the Living Environment for an Aging America Fund (LEAAF) and St. Joseph Hospital & Health Care Center, 2960 North Lake Shore Drive combines the privacy of a personal residence with social aspects of a club. John Macsai (Chicago) was the architect, with Culpepper, McAuliffe & Meaders (Atlanta) orchestrating the interior design.

According to principal interior designer James Culpepper, the exclusive lake-front site was in itself sufficient to establish the high-end quality of the development. Its adjacency to St. Joseph Hospital—assuring that residents can get quick medical attention if needed—is also a marketing advantage. In addition, St. Joseph's employees staff an in-house wellness center at 2960.

The challenge faced by the interior design team was to create upscale, residential-style spaces that would suit prospective residents, many of them already living in highrise apartments in the area. Culpepper and his staff worked with a Hyatt team led by Ron Kollar, assistant vice president of planning and design for Classic Residence properties, to develop a club-like environment. "We wanted to eliminate the notion of an institution, and wed top-notch services and amenities with comfortable interiors," Kollar says.

Residents are welcomed to their home by a sheltered porte-cochere. A concierge awaits them in the elegant lobby, which is paneled in bird's-eye maple, a light wood used for most millwork through the public spaces. A custom-designed, patterned oval carpet reiterates the domed ceiling above. "There is a play of dark and light fabrics and finishes, and sturdy accent pieces such as a console that clearly define spaces and planes for aging residents," Culpepper says.

The first floor of the building houses other common spaces including a library, hair and beauty salon, and mailroom. Artworks commissioned from local artists, historic photographs of Chicago, architectural artifacts, antique posters, tapestries, and quilts add interest and charm to these spaces.

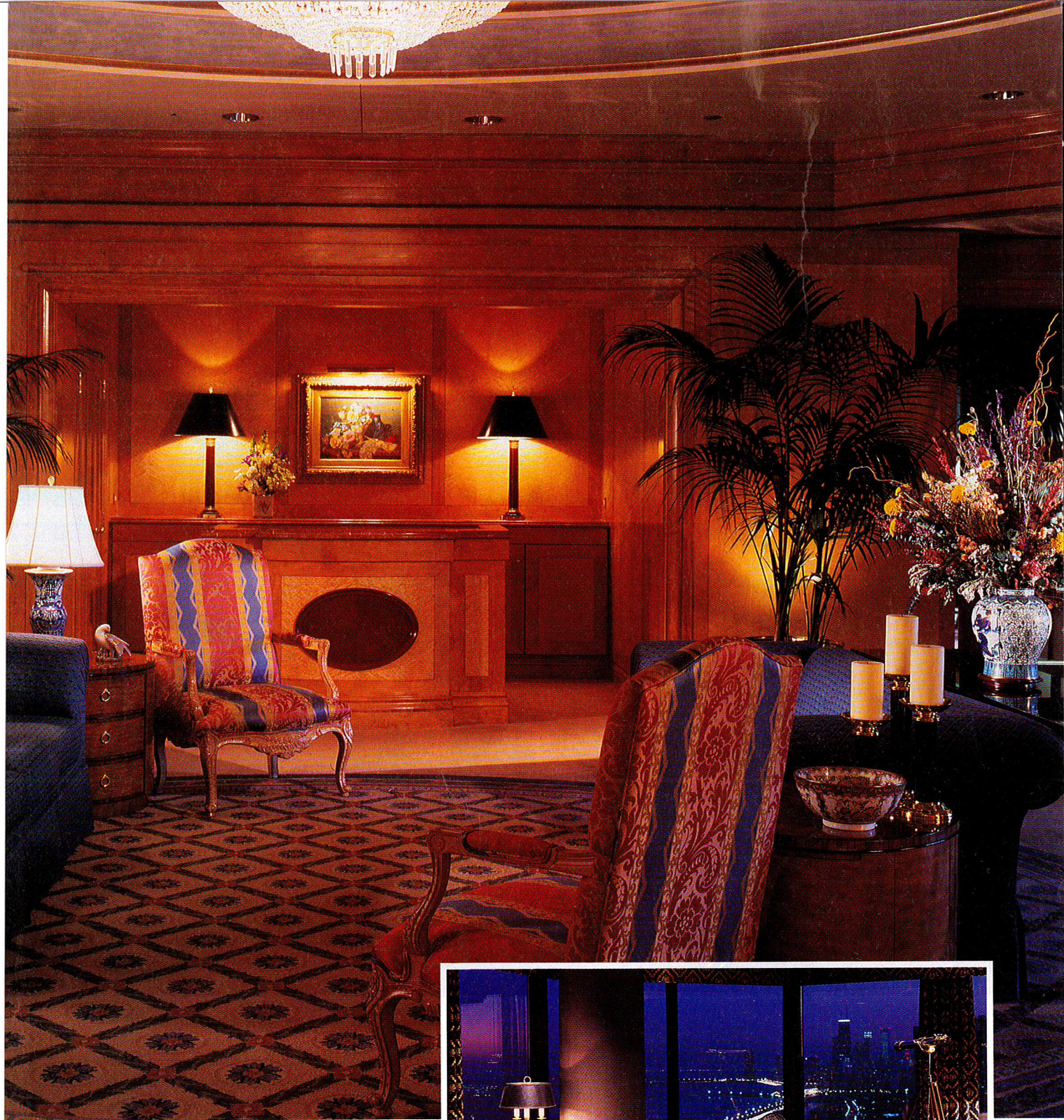
On the second floor, particular attention was paid to the circulation flow from the Wintergarden Lounge, the Club Room, and the Main Dining Room. The adjoining rooms were



The 37-story Classic Residence by Hyatt (left) in Chicago sits in an upscale neighborhood of highrises beside Lake Michigan.

The residentially scaled lobby of 2960 North Lake Shore (above) imparts a sense of traditional elegance. Bird's-eye maple and strongly contrasting finishes and fabrics help residents with poor eyesight distinguish spatial relationships. *Sofa: Custom Craft. Side chairs: Lambert. Fabrics: Sancho Hesslein, Clarence House, Brunswick & Fils, Payne Fabrics.*

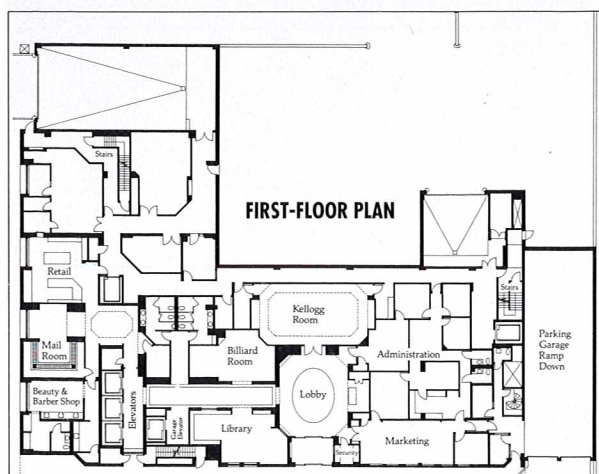




Console: Accentric, Inc. End tables: Drexel Heritage. Entry Console: Murray's Iron Works. Lighting: Remington Lighting, Paul Hanson, City Lights, Georgia Lighting, House of Troy, T.A. Greene. Carpet: U.S. Axminster. Custom rug: Lacey Champion. Draperies: Amberco. Accessories: International Terra Cotta, Antiques, Ltd. Millwork: Associated Woodworking Corp.

The penthouse Skyline Room (right) accommodates 100 guests for special evening events. Chairs: Hickory Chair with Brunswick & Fils, Clarence House fabric. Tables: Hickory Chair. Draperies: Amberco with Herschell's Fabric. Lamps: Remington Lighting. Carpet: Suncraft.





Owner:
Living Environments for an
Aging America (LEAAF)
Developer:
RESCORP Development
Architect:
John Macsai
Interior Design:
Culpepper, McAuliffe
& Meaders
Project team:
James Culpepper, Mazie
Wiepper, Robert Scott,
Karen Franklin
Photography:
Tony Soluri

The Wintergarden is the community gathering place at the North Lake Shore facility. Adjacent storage space can hold furnishings if the space must be cleared for community functions or meetings. *Sofas: Custom Craft. Chairs: Custom Craft, Baker, Hickory Chair, Henredon, Jeffco. Fabrics: Brunswick & Fils, Hines & Co. Payne Fabrics, Stroheim & Romann, Andre Bon, Fonthill, Ltd., Herschell's Fabrics, Kravet. Tables: Drexel Heritage, Murray's Iron Works, Century Furniture, Hickory Chair. Lighting: Paul Hanson, Remington, Chapman Lighting, T.A. Greene. Draperies: Amberco. Accessories: Sarried Ltd., Antiques Ltd., International Terra Cotta. Wallcovering: Essex. Carpet: U.S. Axminster. Millwork: Associated Woodworking.*

2960 NORTH LAKE SHORE DRIVE

designed as a suite, allowing activities to proceed simultaneously while permitting residents to easily move from one area to another. Traditional furnishings upholstered in a palette of rust, blue, green, and beige coordinate the decor.

The Wintergarden is the "cross-roads of the community," Kollar says. Large wrap-around windows with a southern exposure afford lots of sunlight and views of the neighborhood. Seating vignettes include a variety of options—upholstered chairs surrounding game tables, comfortable sofas and club chairs, and seating next to floor lamps for reading. A kitchenette services club meetings and other functions.

A series of coffers trimmed in maple modulates space in the main dining room. Maple Empire-style dining chairs, a custom-patterned carpet, balloon window shades, and lakefront views create an elegant spot for dining. Sconces, table lamps, and pinlights illuminating tabletops provide good lighting coverage while reducing glare.

The Club Room, with a bar, leather-topped gaming tables, two sofas, and pull-up chairs, serves as an additional activities space and as a waiting area for the dining room. Hand-rubbed walls with stenciled borders and maple furnishings and millwork create a cozy environment.

In the penthouse of 2960 Lake Shore, the 1,200-square-foot Skyline Room is designed as a dramatic evening function space. Black upholstery fabrics with gold detailing are the perfect foils for a backdrop of sweeping views of the Chicago skyline.

On the 22 residential floors, a total of 340 one-, two-, and three-bedroom units feature kitchens and 24-hour emergency call systems. Residents furnish their own apartments and may choose from three carpet colorways. On each floor, a different furniture grouping at the elevator lobbies and color-coding of alternating floors orient residents.

Other amenities include a garden cafe serving breakfast and lunch, fitness center with whirlpool, billiards room, and four hotel-style guestrooms available for overnight visitors. —William Weathersby, Jr.



The main dining room (top) provides a formal ambience for dinner. Structural columns paneled in maple and dividers topped with etched glass screens separate the room into smaller spaces. *Chairs: Lambert. Fabrics: Design Tex, Pollack & Associates, Brunswick & Fils, Payne Fabrics. Table tops: Shelby Williams Industries. Table bases: Falcon Products. Lighting: Dana Creath designs, Paul Hanson, Originals 22, Georgia Lighting, House of Troy. Draperies: Amberco. Carpet: U.S. Axminster. Wallcovering: Seabrook Wallcovering. Piano: Weber Pianos. Accessories: International Terra Cotta. China: Villeroy & Boch. Flatware: Oneida. Glassware: Cardinal. Napery: Artex International.*

A brass chandelier, reproduction Empire-style furnishings, and traditional striped wallcovering create the look of a residential dining room in this enclosed private dining area (above). *Seating: Hickory Chair. Fabrics: Brunswick & Fils, Fonthill, Kravet. Casegoods: Hickory Furniture. Lighting: Remington Lighting, Speer Lighting. Carpet: U.S. Axminster. Wallcovering: Skancelli. Mirror: Carver's Guild. China: Villeroy & Boch. Flatware: Oneida. Glassware: Cardinal. Napery: Artex International.*